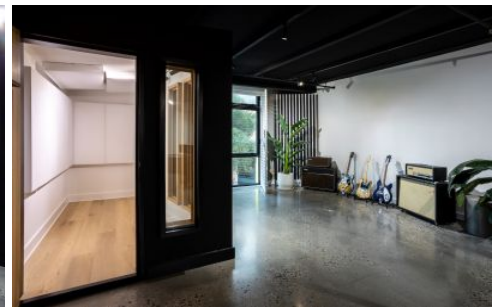


# ROSIN SMYTH



## 115/87 Gladstone Street South Melbourne VIC

Nestled in South Melbourne's sought-after Industry Business Hub, this New York industrial-style office suite offers a unique, private environment ideal for a variety of professional uses. The space features premium industrial finishes such as polished concrete floors and exposed concrete walls. With a private kitchenette and discreet atmosphere, this office suite provides both style and functionality for any business seeking a quiet, modern workspace.

### Key Features:

- Area: 82 m<sup>2</sup>\*
- Sold as Vacant Possession or subject to a short-term lease (3-6 months)

**Type** : Offices  
**Price** : Contact Agent  
**Building Size** : 82 sqm  
**View** : <https://www.rosinsmyth.com.au/8136744>



**Massimo Smyth**  
9695 5999



**Martin Smyth**  
9695 5999

[For full version visit the website](https://www.rosinsmyth.com.au)

<https://www.rosinsmyth.com.au>