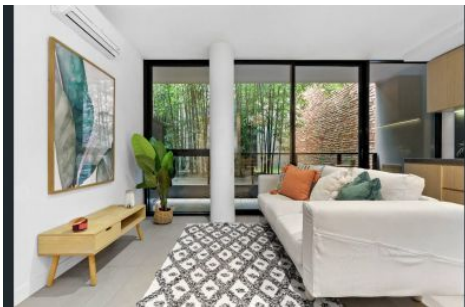


# ROSIN SMYTH



**11/89 Roden Street West Melbourne VIC**

**2  1  1 **

Nestled in West Melbourne just moments from the CBD, "ILLURA" presents a luxurious urban retreat. Designed by Elenberg Fraser Architects, this property epitomizes sophisticated inner-city living. As you step into the expansive lobby, a striking green wall facade and tranquil bamboo gardens set the tone for a truly remarkable experience.

**Key Features:**

- Two Bedrooms: Both bedrooms include built-in robes (BIR).
- Central Bathroom: Modern and bright with European laundry equipped with washer and dryer.
- Living and Dining Area: Spacious and open-plan, flowing seamlessly to an undercover balcony overlooking a serene vertical bamboo garden.

**View :** <https://www.rosinsmyth.com.au/8049304>



**Massimo Smyth**  
**9695 5999**