

ROSIN SMYTH



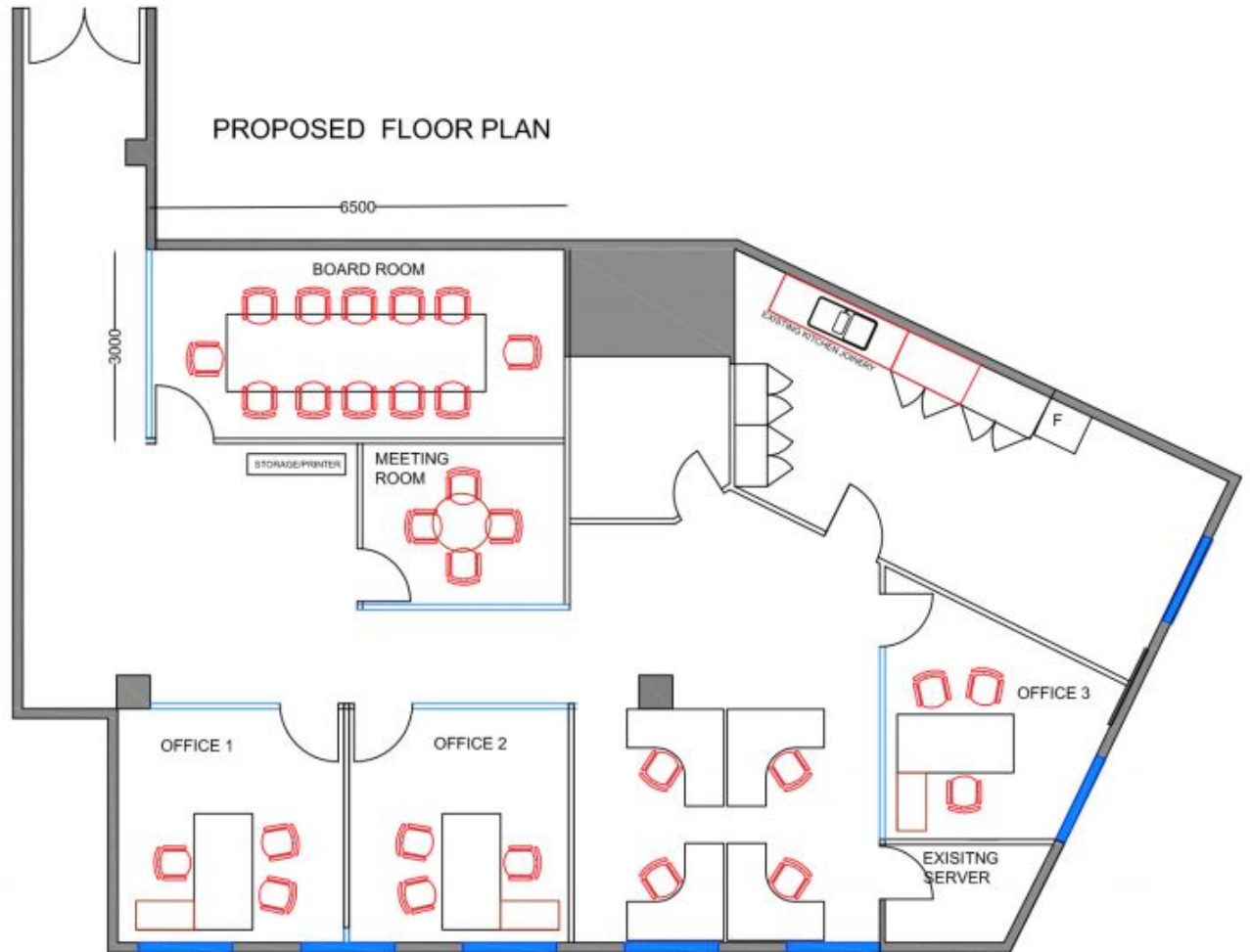
2/2-6 GLENFERRIE RD MALVERN VIC

- *EXCELLENT PUBLIC TRANSPORT INCLUDING TRAINS, TRAMS AND BUS AT DOORSTEP.
- *PASSENGER LIFT TO ALL LEVELS.
- *DISABLED WC AND ACCESS PROVIDED.
- *SECURE BUILDING WITH AFTER HOURS ACCESS.
- *RECENT FIT OUT PROVIDED FOR 4 OFFICES, OPEN PLAN AREA, SPACIOUS MEETING ROOM, IT ROOM AND LARGE STAFF AMENITIES. (FLOORPLAN ATTACHED)

Type : Offices
Building Size : 174 sqm
View : <https://www.rosinsmyth.com.au/6197709>



Martin Smyth
9695 5999



SCALE: 1000 2000 5000